



DAMEN STAN PONTOON® 6316

“YN 523807”

GENERAL

TYPICAL APPLICATIONS
TYPICAL AREA OF OPERATION
CLASSIFICATION

Deck Cargo, RoRo Cargo
Deep sea, Coastal waters, Harbours,
Inland waters
Lloyd's Register + 100 AT Pontoon
IWS for non-propelled and
unmanned vessels

DIMENSIONS

LENGTH MOULDED 63,00
BEAM MOULDED 16,50
DEPTH MOULDED 3,50
DRAUGHT MAX 2,75
DEADW. MAX. 2100

CAPACITIES

DECK LOAD 15 ton/m²
BALLAST TANKS 19 pcs.
DECK THICKNESS 16 mm extra heavy deck

BALLAST SYSTEM

DE-AERATION
SOUNDING/FILLING
Goose necks
By means of opening of the
manholes

DESIGN CONDITIONS

SEA WATER TEMPERATURE 0° to +35° C
OUTSIDE AIR TEMPERATURE -5° to +45° C

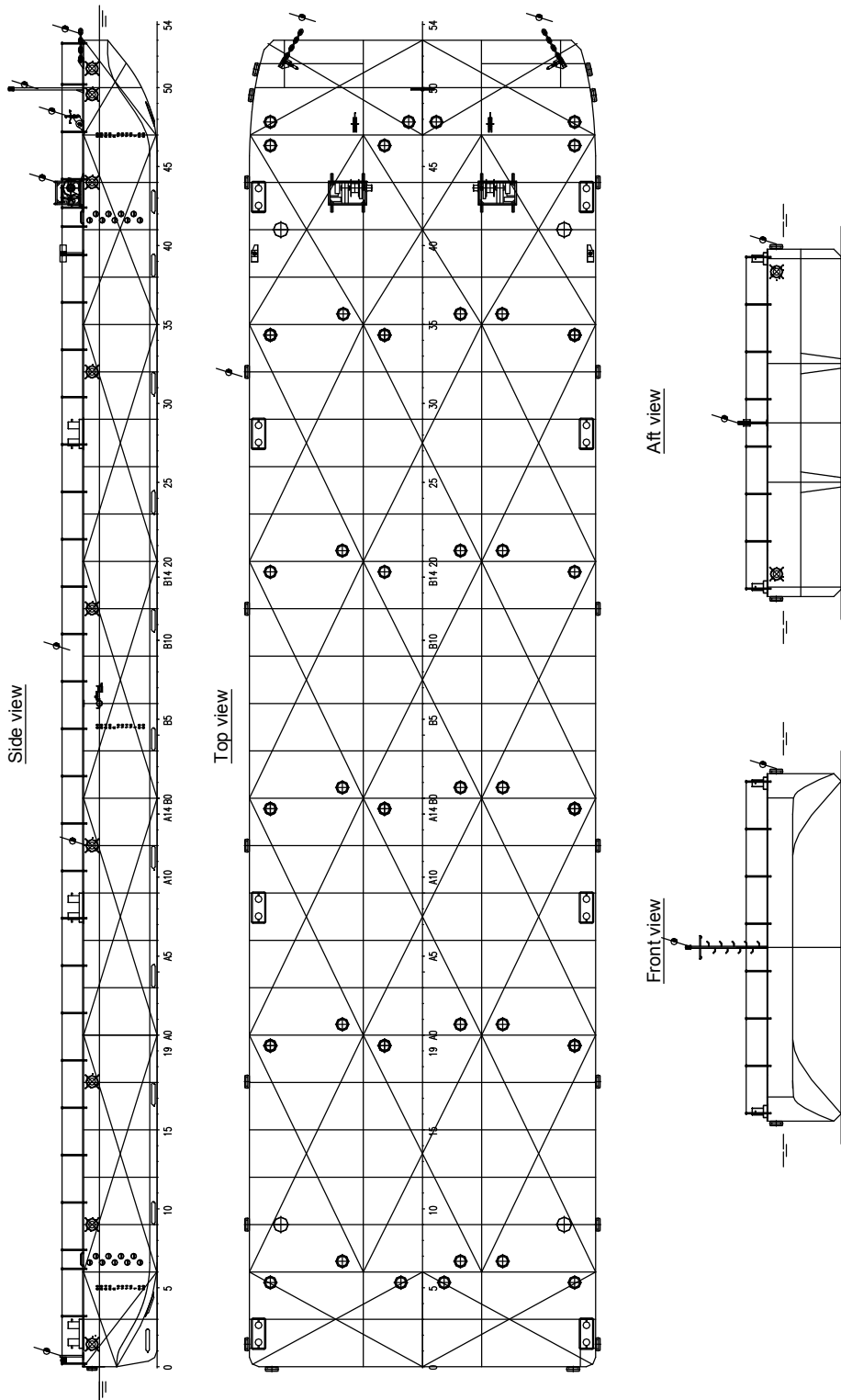
STANDARD EXECUTION

TOWING BRACKETS One on PS and one on SB at foredeck
BOLLARDS 8 double bollards
DRAUGHT MARKS At fore, midship and aft on PS and SB every 20 cm
BOARDING LADDERS Ladders made of recess steps in the hull (2 on SB and 2 on PS)
CATHODIC PROTECTION Zinc anodes on underwater part of the hull
MANHOLES Flush single point closing manholes
EMERGENCY TOWING PIN 1 pc. flush mounted in the bow

OPTIONAL EQUIPMENT

WINCHES Anchor / Mooring winches
ANCHORS Anchors and wires
FENDERING Air plane tyre fender system
TOW CHAINS Tow chains for connection to a towing bridle
NAVIGATION LIGHTING Navigation lights according to the standard for international towage
ANTI-FOULING RAILINGS Anti-fouling paint system
Removable stanchions with wire guard rails

Mentioned deadweights are estimated and excluding optional equipment.



DAMEN STAN PONTOON[®] B16 RANGE

"YN 523807"

DAMEN

DAMEN SHIPYARDS GORINCHEM

Member of the DAMEN SHIPYARDS GROUP



Industrieterrein Avelingen West 20
4202 MS Gorinchem

P.O. Box 1
4200 AA Gorinchem
The Netherlands

phone +31 (0)183 63 99 11
fax +31 (0)183 63 21 89

info@damen.nl
www.damen.nl