

A large-scale industrial construction site at night, illuminated by numerous bright spotlights. In the foreground, a large crane is positioned next to a massive cylindrical component, likely a reactor or storage tank, which is being moved or installed. The background shows a complex network of pipes, scaffolding, and industrial structures, with a tall tower visible on the left. The overall scene conveys a sense of heavy engineering and logistics.

Complex engineering and logistic solutions  
for industries

## Activity areas

Engineering

Beluga Engineering  
& Technology

Fleet

Beluga Marine

Projects Logistic

Beluga  
Projects Logistic

EPC/EPCM

Beluga Construction

## Solutions

**Complex projects**

combinability of the machinery & equipment

**Execution of works**

in cramped conditions

**Installation of oversized cargo  
at the different elevations**

including below ground level

**Moving and heavy lifting  
of assembled equipment**

without stopping production

**Without dismantling load-  
bearing structures**

moving equipment into buildings

**Alternative to crane operations**

due to greater mobility and compactness



## **We reduce costs**

using craneless lifting technologies and detailed elaboration of logistics schemes



## **We reduce time**

of installation with fully assembled equipment at ground zero



## **We execute works in cramped conditions**

without dismantling the roofs of workshops and disturbing the thermal circuit



## **We work in difficult weather conditions**

taking into account natural areas, features of the landscape and the construction site



## **We minimize risks**

of equipment damage and accidents



## **We provide engineering and construction consulting**

at the early stages of design engineering of industrial facilities and equipment

## **Design engineering and organization of heavy lifting, installation and transport works at:**

- new construction
- operating production
- overhaul
- modernization or production expansion



Technical audit, **equipment selection**,  
**process modeling**

**Installation/dismantling** of heavy **process**  
**equipment**

**Replacement** of assembled/disassembled  
equipment **at various heights**

**Horizontal movement**  
using skidding system or jacking

**Large-scale assembly** of industrial  
equipment

**Transportation, load-in, load-out**, project  
position installation

**Factory relocation**



Oil and gas



Chemical industry



Machinery



Power



Mining industry



Manufacturing industry



Metallurgy



Infrastructure



Ports and shipyards



- Planning of work execution, process flow charting, 3D modeling
- Route survey, transport and lifting equipment type selection, load calculation
- Design of cargo securing plan
- Design of rigging equipment
- Technical audit and optimization of existing projects
- Roll-in and roll-out projects (RO-RO method)
- Development of ship lifting and dredging projects
- Positioning process design for anchor and sluice systems and underwater objects



- Transportation by road, water and railway transport
- «Last mile» turnkey project execution: transshipment, transportation, discharging
- Moving over/under pipelines, overpasses and other construction and civil infrastructure objects
- Installation of industrial equipment: turbines, machine tools, generators, presses, etc. to project position
- SKD (large-scale) assembly of process equipment
- Installation/dismantling of bridge spans and transport infrastructure elements
- Lifting / lowering and moving of equipment using strand jacks, gantry and skidding systems





- Transport engineering
- Transportation of special equipment, oversized and heavy industrial cargo
- Development and approval of road traffic organization procedure
- Obtaining a special permit for the oversized heavy cargo transportation on the territory of Russia and other countries
- Transportation by specialized road and railway transport
- Fleet chartering, organization of sea and river towing
- Obtaining emergency approvals (navigation after season closure)
- Customs services and insurance



- Organization of sea and river towing
- Provision of towing services during mooring operations
- Chartering of special purpose vessels
- Positioning of ships and offshore facilities, anchor handling
- Offshore projects support
- Transportation of bulky and heavy cargoes by water transport
- Commercial and technical management of ships of the third owners
- Dredging and underwater technological operations





- Development of engineering solutions and project documentation
- Procurement/supply of equipment and materials on a turnkey basis
- Organization of construction works
- Performance of certain types of construction and installation works by own strength or subcontracting
- Coordination of subcontractors
- Minimizing the risk of postponing project deadlines

**Result:**

- Construction **process continuity**
- **cost-effectiveness** and **safety**

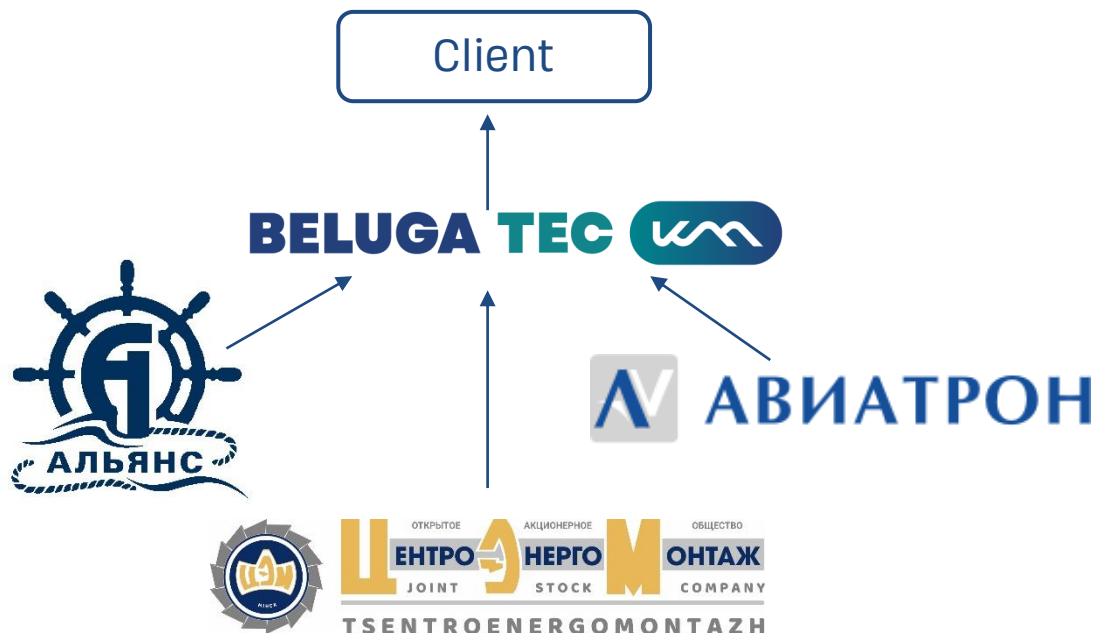


# Consortium of BELUGA TEC partners – one-stop solution for the Client

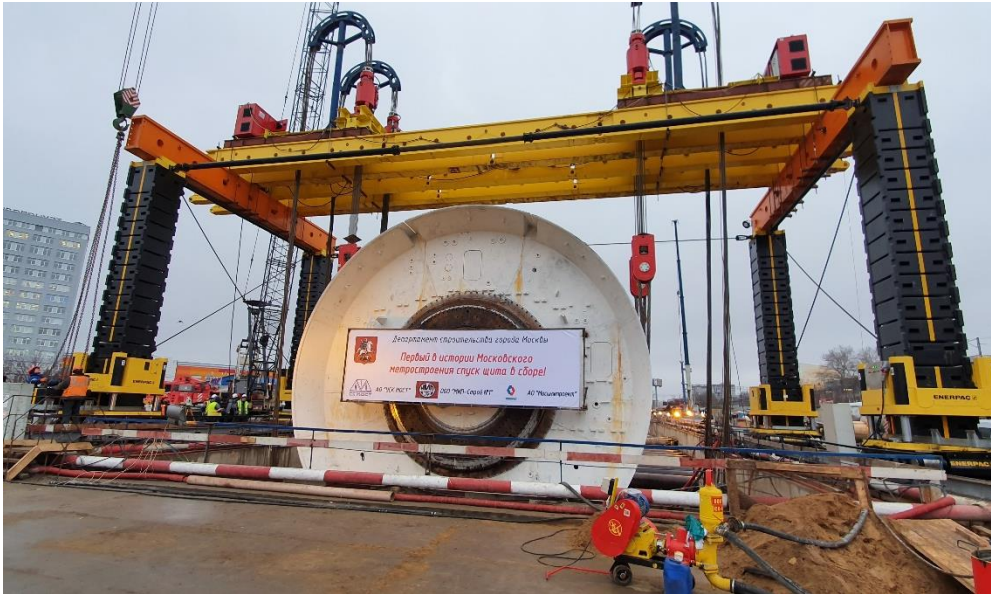
We accumulate the potential of our partners in order to:

- + optimize the use of resources
- + create a unified transparent system of construction process management
- + engage as executors (co-executors) of a contract concluded as a result of a tender or under subcontracts

- Organization of procurement/supply of equipment and materials on a turnkey basis
- Transportation projects using water and land transport
- Realization of planned, overhaul and emergency repairs
- Rapid mobilization of transport and lifting equipment







## Installation at different elevations including below ground level

- + Assembling and lifting equipment in confined spaces
- + Parallel operation to reduce construction time
- + Lowering the load below ground level
- + Load positioning accuracy up to 1 mm



## Lifting and rigging of equipment without stopping production process

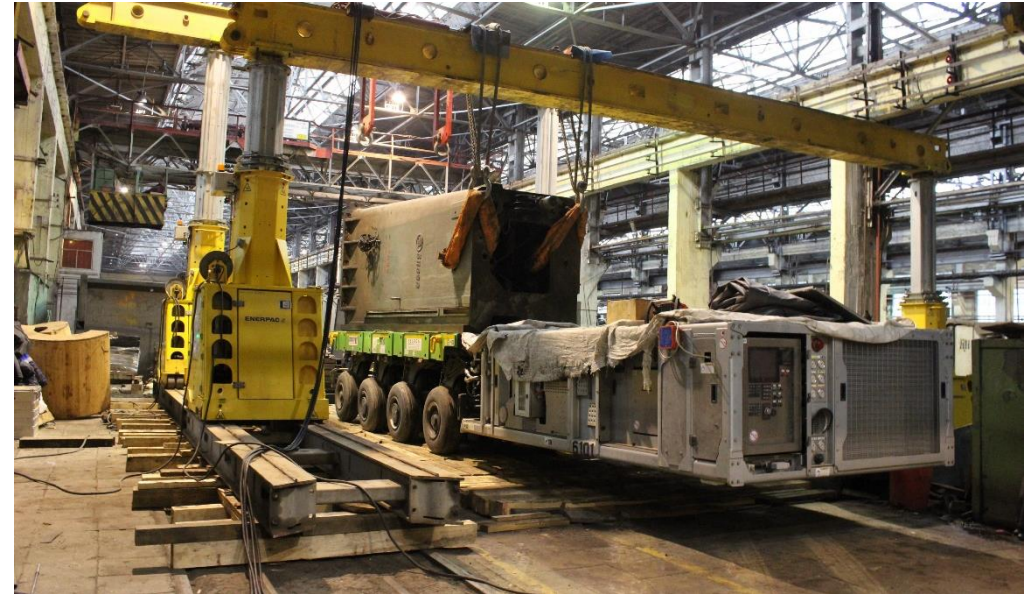
- + Load tilting without stopping production process
- + Dismantling and moving of assembled and disassembled equipment
- + Installation and relocation of equipment without dismantling of load-bearing structures and roofing
- + Execution of works in cramped conditions





## Moving equipment without dismantling load-bearing structures

- + Lifting oversized heavy cargo to various heights
- + Horizontal relocation into technological cutouts
- + Replacement of equipment without dismantling existing production lines and communications



## Alternative to crane operations due to greater mobility and compactness

- + Jack and Slide Solutions
- + Loading on transport, unloading on the foundation
- + SKD (large-scale) assembly of equipment



## Complex projects

combinability of the fleet, transport and lifting equipment

- + Unique technical and engineering solutions
- + Roll-in and roll-out projects (RO-RO method)
- + Loading / unloading
- + Installation in the project position
- + Construction of temporary berths
- + Dredging
- + Diving operations at a depth of 35-40 m
- + Lifting operations



### Transportation and installation of the boiler drum Volgogradskaya TPP, 2022

Weight: 114 t  
Length: 19,6 m  
Lifting height:  
27,8 m



### Stator replacement Kalinin NPP, 2022

Weight: 333 t  
Length: 9 m  
Width: 5,2 m  
Height: 4,6 m



### Transportation of the reactor vessel Kursk NPP, 2021

Weight: 347,5 t  
Length: 11,3 m  
Width: 5,7 m  
Height: 5,3 m



### Stator replacement Novocherkasskaya SDPP, 2022

Weight: 288 t  
Length: 8,7 m  
Diameter: 4,7 m





# Success stories

## Power

### Transportation and installation of the drum Nevinnomysskaya SDPP, 2020

Weight: 145 t  
Length: 19,6 m  
Diameter: 2,5 m



### Dismantling of the stator Novocherkasskaya SDPP, 2018

Weight: 288 t  
Length: 8,7 m  
Diameter: 4,8 m



### Equipment delivery Nizhneturinskaya SDPP-2, 2014

Weight: 240 t



### Installation of a gas turbine Yuzhnouralskaya SDPP, 2013

Weight: 340 t





# Success stories

## Oil and gas

### Equipment relocation JSC «Kuibyshev Refinery», Samara, 2023

Weight: 52 t  
Length: 25 m  
Height: 5,5 m  
Width: 4,67 m



### Verticalization of hydrogen bullets LLC «Irkutsk Polymer Plant», Ust-Kut, 2023

Weight: 107,8 t  
Length: 18,6 m  
Height: 3,7 m  
Width: 3,9 m



### Replacement of buoyancy tanks RMD CPC-R JSC «Caspian Pipeline Consortium – R», 2022

Weight: 14 t  
Diameter: 2,5 m  
Height: 3,1 m  
Length: 7 m  
Dives: 300



### Equipment relocation JSC «Gazprom Neft-Omsk Refinery», Omsk, 2020

Weight: 161 t  
Length: 64,7 m  
Diameter: 6,1 m





# Success stories

## Oil and gas

**Transportation of heavy cargo to the berth of Belokamenka vlg. LLC «Renaissance Heavy Industries», Murmansk, 2022**

Weight: 480 t



**Dredging at the berth of the Omsk Oil Refinery LLC «Gazprom Neft-KS», 2022**

Volume: 15,000 cub. m



**Dismantling the stinger section LTD «Mortransservice», St. Petersburg, 2021**

Weight: 250 t



**Installation of rudder propellers, Murmansk LLC «Global technologies of innovative systems», 2021**

Weight: 45,6 t





# Success stories

## Oil and gas

### Delivery and movement of parts of the R202 regenerator Ural Oil Refinery «BASHNEFT», Ufa, 2015

Weight: 150 t



### Delivery of reactors and coke chambers JSC «Antipinsky Oil Refinery», Tyumen, 2014

Length: 42,10 m  
Diameter: 8,33 m  
Total weight:  
6 465,7 t



### Delivery and loading of reactors Refinery «Lukoil», Kstovo, 2013

Weight: 200 t



### Reactor moving OAO «Gazprom oil-Omsk Refinery», Omsk, 2011

Weight: 315 t  
Length: 28 m  
Diameter: 4 m  
Height: 5 m





# Success stories

## Infrastructure

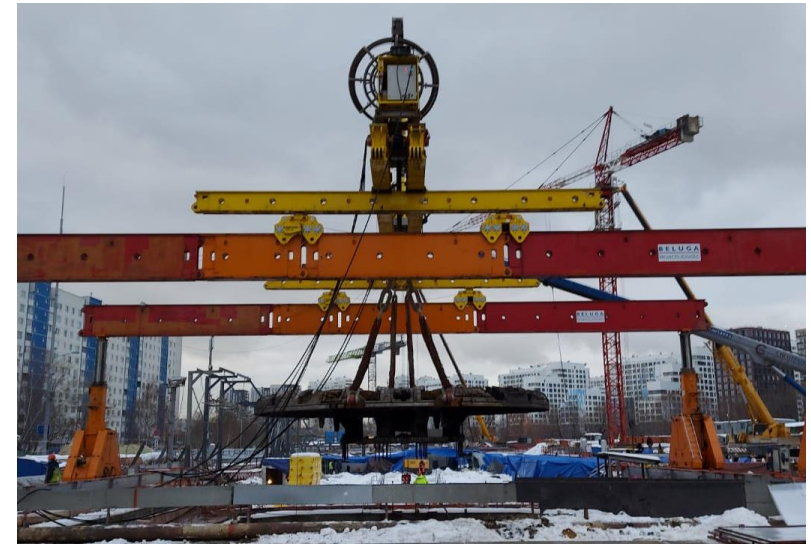
### Construction of a bridge across the river. Volga JSC «Roads and Bridges», Samara region, 2022

Depth: 30 m  
Formwork  
weight: 1038 t



### Lifting parts of the tunneling shield JSC «BTS MOST», Moscow, 2022

Weight of largest  
element: 180 t  
Depth of  
foundation pit: 27  
M  
Total weight of  
elements: 1522 t



### Installation of a bridge span JSC «Roads and Bridges», Kubinka, 2021

Weight: 803,4 t  
Length: 98,02 m  
Width: 6,57 m  
Height: 16,87 m



### Assembling and lowering the TMC to the project position JSC «CMC MOST», Moscow, 2019

Weight: 870 t  
Depth of  
foundation pit: 27  
M



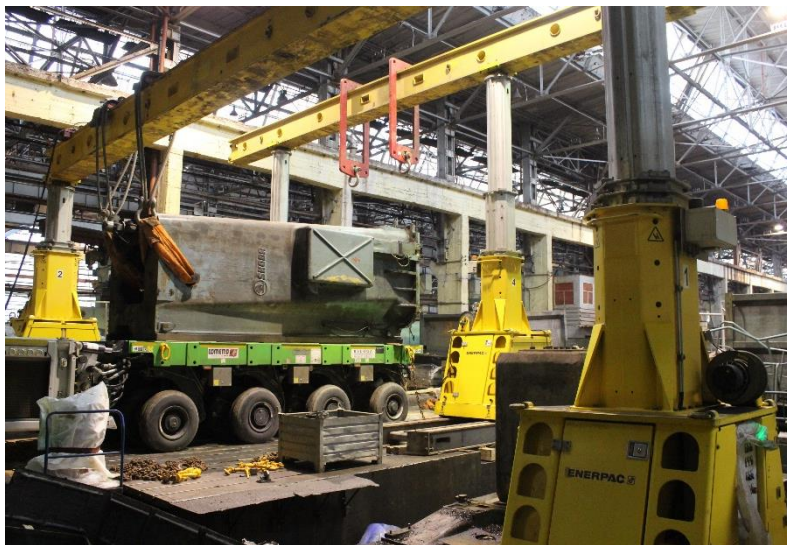


# Success stories

## Machinery

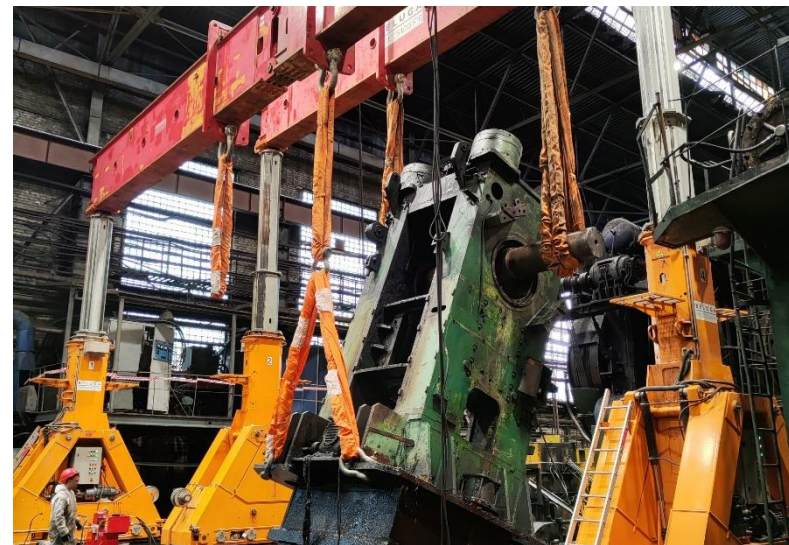
### Dismantling the SKODA machine JSC «Elektrostal Heavy Engineering Plant», Elektrostal, 2023

Weight: 87 t  
Length: 2,5 m  
Height: 5,9 m  
Width: 1,6 m



### Moving the press beds PJSC «Chelyabinsk Forge and Press Plant», PJSC «Avtodiesel», Yaroslavl, 2023

Weight: 126 t, 85 t



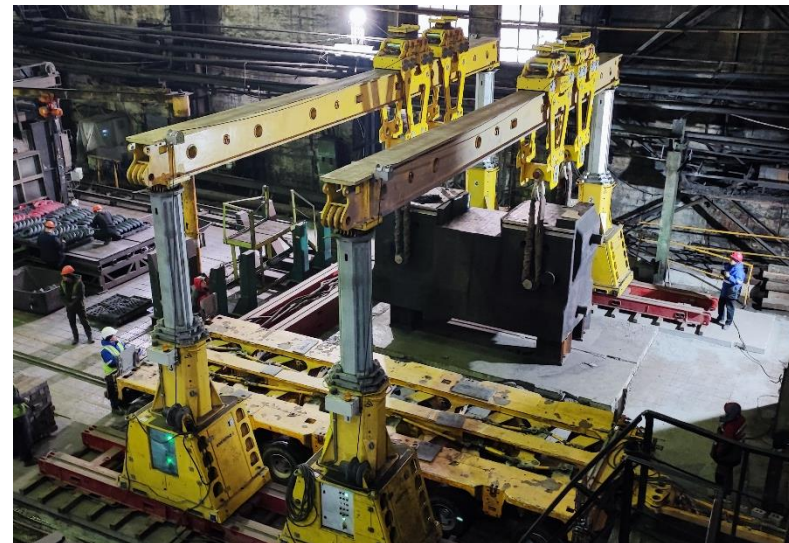
### Moving and mounting of pressing equipment LLC Oryol steel rolling plant, Oryol, 2022

Weight: 65 t



### Replacing the inertial block of the hammer PJSC «Chelyabinsk Forge and Press Plant», Chelyabinsk, 2022

Weight: 422 t  
Length: 6,9 m  
Height: 6,9 m  
Width: 2 m





# Success stories

## Mining and metals

### Unloading and installation of mixers PJSC «Magnitogorsk Iron and Steel Works», 2018

Weight: 472т/92 т  
Length: 22м/15 м  
Diameter: 5,3 м



### Mill transportation JSC «Polyus Gold», Magadan, 2013

Weight: 900 т



### Handling and installation of hot rolling mills parts JSC «Kamensk-Ural Metallurgical Plant», 2016

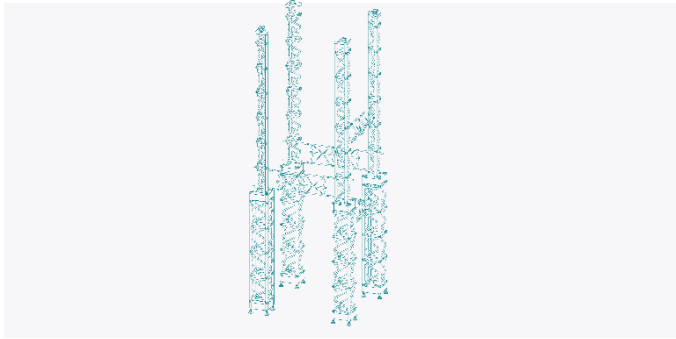
42 details  
Weight: from 80  
to 512 tons  
Length: до 22 м  
Diameter: до 6 м



### Presses movement PJSC «Magnitogorsk Iron and Steel Works», 2018

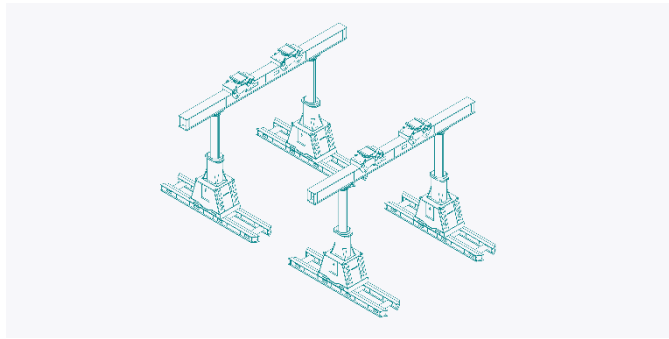
Weight: 600 т  
Length: 6,3 м  
Height: 13,4 м  
Width: 5 м





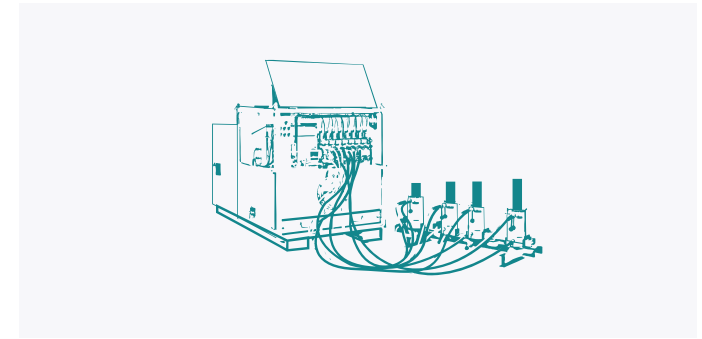
**Greiner "Power Tower"**

- Capacity up to 3600 t
- Lifting height up to 31 m



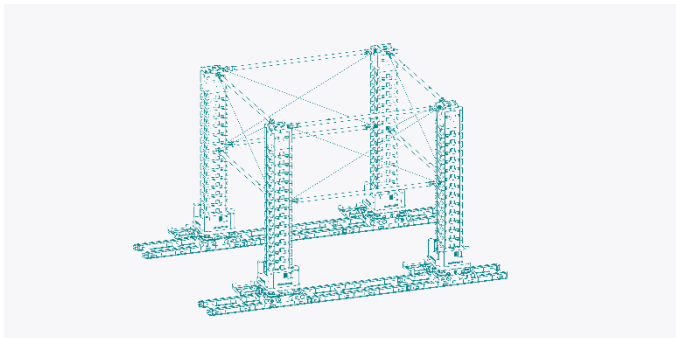
**Gantries "SBL-1100",  
"SBL-500", "SL-300" Enerpac**

- Capacity up to 1100 t
- Lifting height up to 12 m



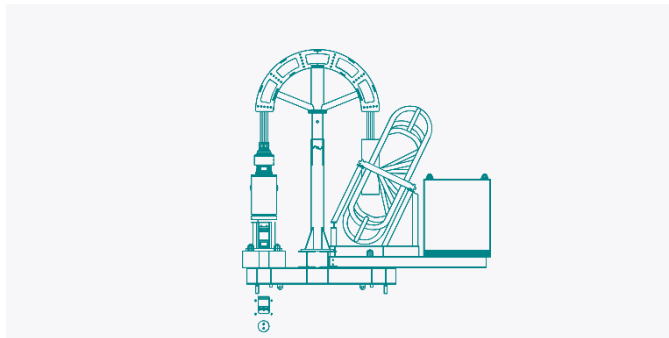
**Synchronous lifting system  
"EVO System"**

- Capacity from 50 t to 500 t



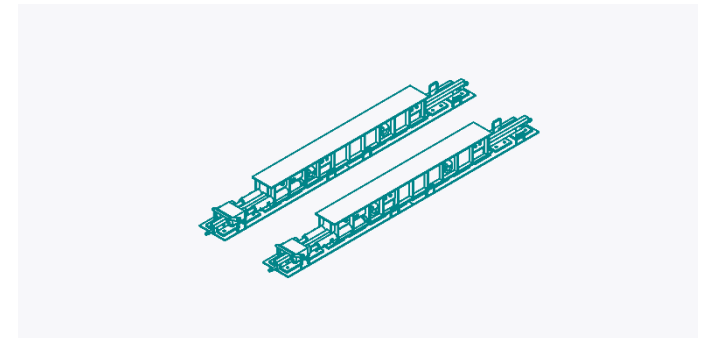
**Jack-Up System «JS250  
Enerpac»**

- Capacity up to 1000 t
- Lifting height up to 25 m



**Strand Jacks «HSL20006»**

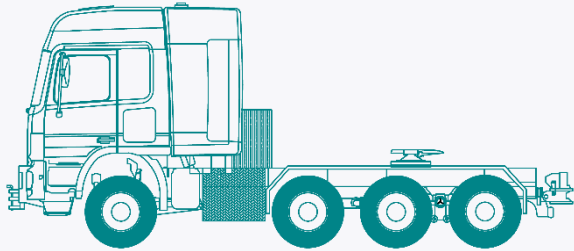
- Capacity 220 t
- Lifting and lowering height up to ~ 2 km



**Skidding System**

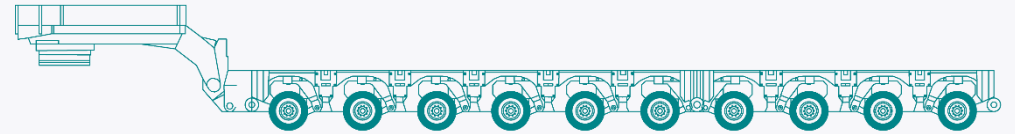
- Capacity up to 500 t





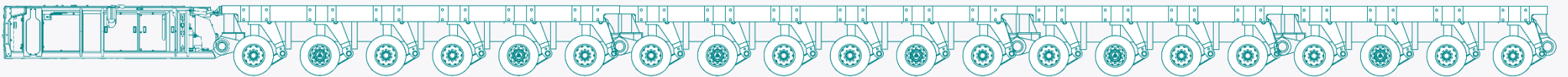
Trucks “MAN”,  
“Mercedes”, “Volvo”

- Power up to 680 hp



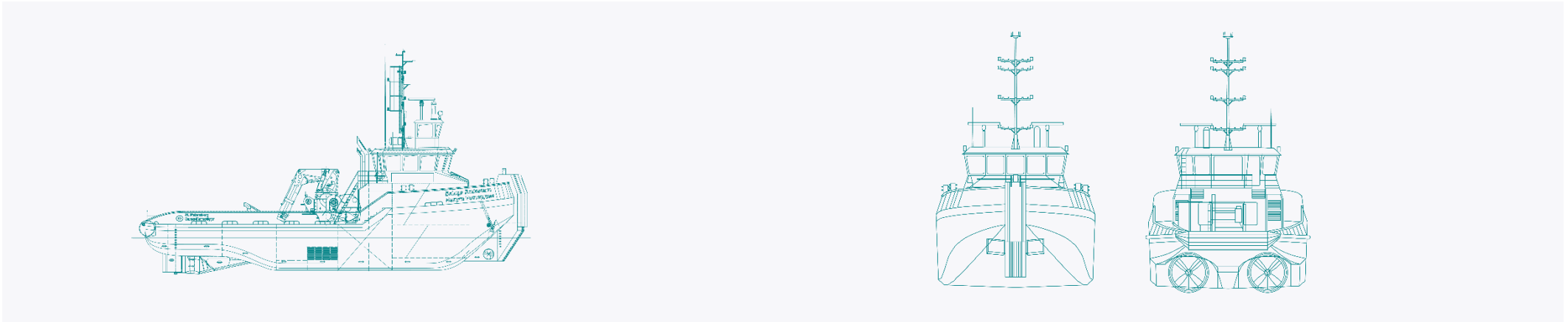
Modular trailers, modular split axels, lowbed  
trailers “Faymonville”

- Capacity up to 36 t/axle



Self-propelled modular transporters “Cometto”

- Capacity 60 t/axle



## Anchor tugs

- Power up to 680 hp



## Non-self-propelled barges

- Capacity up to 3200 t



- Compliance with the legislation requirements in the field of labor protection, industrial, fire and environmental safety
- Mandatory identification and risk assessment before starting work
- Company is certified in accordance with the standards GOST R ISO 9001-2015, GOST R ISO 14001-2016, GOST R ISO 45001-2020

14

"Golden Rules of Safety"

0

incidents with disability

4,9

mln. rub. per year of investments  
in HSE activities



# We are proud

## >100 000 t

different cargoes, systems and equipment

## 7000 t

maximum weight of the lifted load

## 1300 t

maximum weight of the transported cargo

## 229 m

maximum lifted load length

## 47 m

maximum lifting height

## 370 km

length of the longest road route, with total weight of 517 tons

## 142 m

maximum lowering depth

## 300

dives for 1 project





# We change construction approach

**+7 (495) 926 16 43**

[office@belugatec.ru](mailto:office@belugatec.ru)

[sales@belugatec.ru](mailto:sales@belugatec.ru)

BC "Europe Building"  
5, Bryanskaya str.  
Moscow, 121059

Learn more about us  
[www.belugatec.ru](http://www.belugatec.ru)

